

W A R B L E R

May
2018



W
E
N
H
A
S
T
O
N

NOTICE OF REFERENDUM

**Neighbourhood Development Plan for Wenhaston
with Mells Hamlet neighbourhood Area.**

A referendum will be held on

Thursday 24th May

To decide the following question:

**‘Do you want Suffolk Coastal District Council to use
the Neighbourhood plan for Wenhaston with Mells
Hamlet to help it decide planning applications in
the neighbourhood area?’**

Applications to be included on the register of electors for this referendum must be received no later than Tuesday, 8th May 2018.

New applications to vote by post or to change existing absent vote details (e.g. cancellation, redirecting of ballot papers etc.) must be received by the Electoral Registration Officer at the address below by 5pm on Wednesday, 9th May 2018.

New applications to vote by proxy must be received by the Electoral Registration Officer at the address below by 5pm on Wednesday, 16th May 2018.

Applications to vote by emergency proxy at this referendum applied on the grounds of disability or occupation, service or employment occurring after 5pm on Wednesday, 16th May 2018, must be received (duly supported) by the Electoral Registration Officer at the address below by 5pm on Thursday, 24th May 2018.

Suffolk Coastal District Council, East Suffolk House,
Riduna Park, Station Road Melton Woodbridge IP12 1RT

WENHASTON

Produce, Craft & Flea

MARKET

Saturday 26th

MAY

10am – 12.30pm

in the Village Hall

IP19 9EP

A wide and everchanging range of local foods and produce, crafts, plants, home baking and pre-loved treasures

New stallholders always welcome - Pitch fee £6

To book your table (provided) phone

Christine: 01502 478511

or email christinemargaret@hotmail.co.uk

Raising funds for Village Hall Maintenance

Plant Sale

Saturday 12th

May

10.30 to 12.30

**In the Church Yard
(or in church if wet)**

Lots of plants

**Cake Stall, Raffle,
Coffee and Biscuits**

In aid of St Peter's Church



I Braved the Shave!

Losing my hair was actually a very emotional experience for me (much more than I was expecting) but I am so very grateful to everyone who donated so generously in memory of my dad Brian Canham. The encouragement I received from family (especially my mum) my wonderful daughter and all of my sisters).

Also, from friends and even people I've never met; it has just been amazing. I would like to thank Jan, Richard, Wil and Anne at the Wenhaston Village Hall Café. I would like to thank Jane Peters for paying for the hall hire as her donation, and a huge HUGE thank you to local hairdresser Sian Kett who so kindly shaved my head. I couldn't have done it without any of you. Together YOU have all raised an amazing sum of money (as of 15 April £959.03). Thank you all so very very much xxx. If anyone would still like to donate then this can easily be done securely via Cancer Research UK <https://bit.ly/2GZOm6P> . Becky Canham

Wenhaston Village Hall 100 Club

The Wenhaston Village Hall 100 Club March draw has been made and we are delighted to announce the winners:

- 1st prize Mary Wildish (number 61) £35
- 2nd prize Mary Candler (number 146) £25
- 3rd prize Jenny Jeffrey (number 118) £15

Well done to all the winners this time! It's never too late to sign up. A chance to win a prize costs just £1 a month so anyone wishing to join now, the fee is £4 for the year starting from May.

Please pay by cash or cheque, made payable to Wenhaston Village Hall 100 Club, and hand in, clearly marked with your name, in an envelope to the Post Office or either of the promoters, Kirsten West or Trish Gower. All enquiries please phone Trish on 478267.

Wenhaston FlowerClub

We welcome Alan Smith back for our meeting on Tuesday 1st May in Wenhaston Church Rooms at 7.30 pm. Alan's demo will be on the theme of "Floral Delights". Everyone is more than welcome, you don't have to be a regular member to enjoy this entertaining evening so please come along. £3 with tea and biscuits included. For more info ring Jean Spindler 01502 478317

Wenhaston Ukulele Group in Action



Photo Lyn Gedney

Wenhaston Save Our Suffolk Swifts Project

Further to the excellent article by Ann Follows in the March issue of the Warbler the WWHMC have approved the installation of five (5) Swift nesting boxes with an appropriate calling system at the village hall. To this end we are looking for sponsorships/donations to cover the costs. All those interested or willing to support this project please contact the swift project co-ordinators namely:

Jonathan Alder: email j.m.alder59@gmail.com Tel. 07881743991.

Alan Miller email . alanm@suffolkwildlifetrust.org Tel. 478788

Some villagers are already in the process of installing boxes on their properties. If any other residents are willing to self-fund boxes and calling systems on their homes, and they require any assistance, for further information please contact Richard Atkins e-mail: swmservices@aol.com.

Richard Atkins

Save Our Swifts – A fund raising walk!

May 23rd at 10.30am starting at “New Delights” car park and walking through the marshes, returning via Dingle Hill and the woods. It is hoped we would see all the seasonal marsh birds especially swifts and hobby. The path can be muddy so appropriate foot wear is needed for this 6-mile walk. Bring a packed lunch! Donations to SOS. For more information and to let me know you are coming please contact Jo on: 01502 478600 or josmall3@outlook.com

Jo Small

Morning Bird Walk.

I will be leading a walk on behalf of Wenhaston Commons Group on Saturday 5th May to look for and in particular listen for birds, especially the regular summer migrants which should mostly have returned by then and be in full song. We'll also look out for other wildlife; butterflies/reptiles/dragonflies etc. Meet at the seat by the pond on Blackheath 09.30am. Everyone is welcome. We'll be passing a hat round at the end for donations to the Commons Group.

Jonathan Alder.

Footpath walking

A morning walk will leave from Wenhaston Village Hall at 10am on Tues 3 May. On Tuesday 17 May, meet at Snape Maltings for a 10am start on a Snape circular walk led by Joan and Peter Waters. Lunch at The Plough & Sail, Snape. For further information please contact Heather Phillips 01502 478545.

News from the Village hall

It has been a busy time at the hall since I took over as Chair, with lots of events going on throughout the winter. It has been a challenge at times to keep the hall warm, but apart from a couple of glitches, the wood chip boiler has proved to be up to the task and I hope you were warm during all the activities which regularly take place at the hall. Part of the Committee's work has been to review the Fire Risk, Health and Safety and Hygiene requirements, and assessments have been carried out to make sure we do our bit to keep safe everyone who uses the hall.

Our new Conditions of Hire and Booking forms reflect the changes we needed to make. Thank you all for making the hall a really special place with such a buzz of activity. If you are new to the village do come along and find out what is going on - details are on the notice board. The café on Wednesday and Saturday mornings 10am to 1pm is an excellent place to meet other people and newcomers are warmly welcomed.

The Committee are also holding several events this year. We have a Jazz night booked with Palomar Jazz Quartet on Saturday 28th July at 7pm, when the bar will be open, and tickets at £14 will include a buffet. Plans are also underway for an afternoon recital later in the summer with cream teas – details to follow. We are also getting together with the church and others to hold a Remembrance Day event after the church service to remember and celebrate the end of WW1, one hundred years ago on Sunday 11th November. Further details will follow in due course. To round off the year we will hold a New Year's Eve party, so do keep those dates free and we look forward to welcoming you to the hall. *Sally A.*

Wenhaston WI April Report

Our Speaker fitted in well with this year's WI Mental Health Matters Resolution. Linda Offord from Clink's Care Farm spoke to us about the 143acre farm set up in 2010 as a social enterprise and business by Doeke Dobma and his wife Iris.

Popular in Sweden and Holland Care Farms are increasing with over 200 now in the UK. The Farm Helpers are people with mental health issues, learning disabilities, autism, brain injuries, and youngsters struggling in the education system. Some attend on a "farming on prescription" basis for a twelve-week period. Others use their Personal Budget or self-fund.

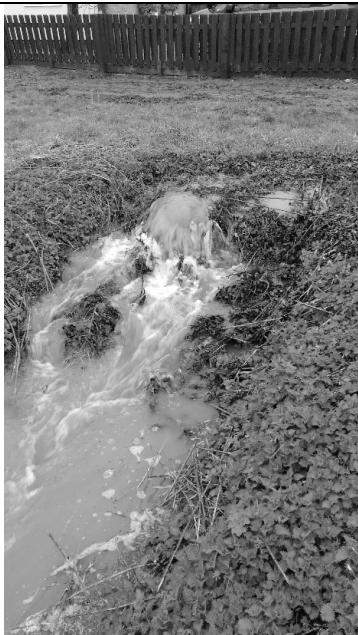
Livestock plays a big part in farm life but there is also a market garden and shop selling the produce. The eggs, lettuces and apple juice that Linda brought flew off the table. As well as learning new skills working on the farm provides helpers with a feel-good factor and boosts their confidence and self-esteem. A very worthwhile enterprise. Next month – Birds of Prey.

Tales from the Waterfront!



The Swim to Halesworth.

Tony Gow.



The Back River waterfall



The Back River breaking its banks.



Dabbling ducks on the flood plain.

Photos Wenhaston Slackers.

Bringing up the Kids



During May our garden birds become less visible as the high activity of pair formation displays and the collection of nesting material stops. They withdraw to the privacy of their nests and the Spring growth of new leaves conceals them from our view.

It is time for them to incubate their eggs. For a chick to develop, each egg must be kept warm by the parents donating their body warmth. To achieve this, they first moult a few feathers to create a brood patch of bare skin and must make sure that all the eggs are exposed to it. It is not, as some people think, a lazy time where the incubating bird merely sits still and is fed by its mate. They are forever shifting about on the nest, moving eggs with their feet or standing up and turning them with their bill to ensure that the heat is divided equally. Most garden birds begin their incubation only when they have laid all their eggs. This makes sense as it means that the chicks will all hatch out roughly at the same time and can be dealt with as a group rather than as individuals with differing needs. They will all need feeding at roughly the same time, and will all leave the nest within hours of each other.

After hatching it is often mayhem within the nest as the chicks enter a continual cut-throat battle with their siblings over the food brought to them by the parents. Each chick stretches up as far as it can. The one who reaches highest wins and gets fed. A weak youngster continually losing out may not survive. Keep an eye out this month for Spotted Flycatchers, several of which made an appearance in the village last year. Although unremarkable to look at, being a dull brownish-grey, their fly-catching antics are charming and distinctive, as they fly from a high perch, dash out to grab a flying insect and return to the same spot.

Roland Hammond

Come and play tennis

We welcome you whether you

want to play regularly, occasionally or just a one-off

Get in touch

email: wenhastontennisclub@gmail.com

phone: 01502 478 202 or 01502 478 770

Feri Fitton

Zena Grant

Wenhaston Tennis Club





BLYTH WOODS
IS VERY
PLEASED TO
ANNOUNCE!
GROVE PIECE is
OURS -

At the end of March “Blyth Woods CIO” (Charitable Incorporated Organisation), became the owner on behalf of the local community – which finally confirms the establishment in perpetuity of our Community Woodland.

After six years’ planning since 2012 - and just before the end of the financial year (crucial for the sake of funding) - we completed the purchase from the Town Estate Church Charity, with a “restrictive covenant” to secure the future of the woodland.

Grove Piece (its old name) is well-placed by the old bluebell wood Vicarage Grove, between Bramfield Road and Bartholomew’s Lane, 10 minutes’ walk from the school along footpaths. Spring is bursting out and this beautiful place is there for *humans* to explore and enjoy, as well as being vital for the impatient *wild creatures* looking for new corridors and places to breed and forage. Bird boxes are ready for occupation, and a Woodcock was seen – a woodland bird looking for a new home?

Recently, under a year’s “licence to occupy”, we made areas for natural generation, planted native saplings, formed a network of “rides” (paths for people not horses!) leading to a pond (to be dug this summer) and central meeting place. And we worked with schoolchildren and the Commons Group. The information board will be set up soon. Please follow www.blythwoods.org for news and our programme of celebrations and activities - also how to become a “Friend”. Our AGM was last month (April) – rescheduled for accounting purposes. Look out for posters for a Plant Identification morning in early summer, led by Graham Peck. Meanwhile, be sure to go over to Grove Piece for the dawn chorus, a quiet moment, or share a sunset with friends.

Serena Inskip for Blyth Woods (CIO) Charity no. 1172343

BLYTH SPIRITS

At our April Meeting we enjoyed an interesting and informative Talk given by Geo Fradgley on the Life and the Paintings of John Constable. Unfortunately, we were unable to enjoy his Pictures as there was a breakdown of the Electricity in the Village! However, Geo compensated by the many stories which he told us of Constable's Life.

In May we shall welcome Francesca Armour- Chelu who tell us about the work of the Libraries and the many Services which they now offer. You are very welcome to come and join us as a guest or perhaps becoming a Member of Blyth Spirits.

Wenhaston Mothers' Union

How much do you know about our garden birds? Linda Hammond, a Wenhaston resident and bird lover, came along to show us slides of our garden birds, and to give us advice about food and feeders. Some species have increased in numbers of late, while others have declined. It is important to feed the birds, especially in winter when many starve, but one has to be careful to keep feeders clean, and to use suitable ones as some can trap the birds, or encourage squirrels etc. We were held spellbound, and Linda was thanked by Jenny Jeffrey.

On 12th May, Margaret & I joined a great number of MU members from across the Diocese at the Lady Day Service in Rushmere Church. We were very impressed by the church itself which has been sympathetically extended to become a hub to the surrounding area. The service was most inspiring, a great deal of thought had been put into planning it, and it went off without a hitch. The banners were all processed, the choir sang anthems, the worldwide president, Mrs Lynne Tembey preached, and we sang our hearts out. There was time afterwards to meet Lynne whilst we shared a wholesome lunch. It is always good to meet other members and therefore feel part of the greater organisation. In May, we are visiting Halesworth branch on Thursday 17^h May at 2pm in the Church Hall. The subject is 'Flowers and their meanings', and we hope most of our members will join us as this is experimental, so we will see how it goes. Cars will leave the Village Hall car park at 1.30pm *Margaret Bloomfield*

Wenhaston Village Show

At last we've seen the sun so plants will have been bought to brighten our gardens. Don't forget to keep your flower pots so that you can create an amazing sculpture for the village show. Then there is the excitement of seeing how many potatoes you can produce from one tuber; a few buckets and potatoes are left so that you can partake in this unique competition. These are available from the café, so you can enjoy a cup of coffee at the same time. *Felicity Jelliff*



Bell Ringers

On Friday 23rd March, a quarter peal was rung in St. Peter's, Wenhaston by members of the Suffolk Guild of Bell Ringers. This was to mark the 100th anniversary of the death of James Farrington, aged 20, in France. He is named on Wenhaston War Memorial, the Pozieres Memorial in France, and on a family memorial in the War Memorial churchyard. He was a bell ringer at St. Peter's himself.

It was rung by members of the Suffolk Guild of Bell Ringers. The bells were previously rung here for Harry Saffell, also a Wenhaston bell ringer, on 27th October 2017. He rung his first peal here on 4th December 1911. He was 23 when he died in Flanders so on that occasion, the ringers celebrated his life afterwards with a Flanders beer.

There is a national roll of honour of the 1400 ringers who were lost in WW1. Each county or other local association is dealing with the centenaries in their own way. Suffolk is trying to produce a publishable performance for each on or as close as possible to the actual 100th anniversary of their death.

**Fused glass 'taster' classes in Wenhaston commencing in June 2018.
£20 per 2-hour session (to include basic materials & use of kiln)
Email chriscarrick@outlook.com for dates and more information.**

Neighbourhood Plan Referendum

You will notice from the front page that a referendum on the Neighbourhood Plan has been called for Thursday May 24th.

You will know that in order to construct this Plan, several rounds of local and district consultation have taken place, and the results have been available to view at the village hall. The final phase was to have the Plan scrutinised by an independent examiner, and having successfully gone through this we now proceed to referendum.

This will be your last opportunity to have your say about the contents of the Plan.

There will be copies available to view at the Post office, in the café and at the Star prior to the referendum.

“The Rise and Rise of Malbec”

Ask anyone remotely interested in wine which wine they think of when you mention Argentina and the answer will almost certainly be Malbec. Its popularity is in no doubt; between 2002 and 2017 exports of Malbec (by value) from Argentina rose by 3,600 per-cent! We drink a lot of it in the UK but the Americans drink even more. The Malbec grape, which came from South West France, produces dark, full-flavoured red wines which make a superb partner for rump, sirloin and ribeye steak. Peppered or chargrilled, Malbec will take it on. It is usually strongly fragrant (blueberries, blackberries, stewed damsons and plums) and consistent in taste. There are many producers but look for Trapiche (Co-op), Catena (Majestic and Waitrose). You'll probably have to pay between £8 and £15 a bottle. For something more reasonable in price try Aldi's Exquisite Argentinian Malbec 2017 at £5-99.

Bernard Orme

Art at the Village hall

The Village Hall cafe has a display of work by Ruth McCabe for a few weeks, still all for sale.

Also Ruth is getting organised for a spring Open Studio, where there will be bargains as well as new work and cards and unframed pieces....

MAY 11 AND 12. 11am to 4pm

OPEN STUDIO & SALE

Threeways, Coles Hill.

www.ruth-mccabe-artist.co.uk

If you don't know exactly where I am on Coles Hill, there will be signs!

Work can be bought by card payment both from the cafe and at the studio.'

Sponsored Walk May 13th

On Sunday May 13th, the Halesworth Dementia Carers Fund are having a sponsored walk along the Halesworth Millennium walk, starting at 10am from the park. This Walk is being called **WALK TO REMEMBER**, giving people the opportunity to Remember a past loved one, a lost pet or maybe a family member or friend with Dementia. This walk will cater for everyone, serious walkers, fun walkers, parents with kids, mobility scooter users and anyone else I have missed. Please ring Jim on 01986 875641 for a sponsor form or for more information. All money raised on this walk will be used to provide much needed respite care for loved ones of a person with dementia. This gives the family carer a couple of hours respite from a very demanding 24/7 caring role. So please ring Jim for a sponsor form or to sponsor someone or to make a donation. We need your help to ensure this very important charity can continue its great work. Our Charity No 1170477 Thank you! Jim Fyfe, Halesworth Dementia Carers Fund.

Ann Follows and Janice Claxton are taking part in the walk, so please **sponsor us** or **join us** and make up a Wenhaston collection and sponsor walking group! For sponsor forms or to sponsor Janet or I, please contact Ann Follows 478324 annfollows@googlemail.com

Playing Field. Outside Sports Equipment.

Within the next month, work should begin on our Phase 2, outside community gym and sports facilities. We expect this to be amongst the best in the county. The only fly in the ointment so to speak, is the ugly wall which surrounds the gym area. After the installation, we would like the Wenhaston community to employ some of its creative talent towards producing a piece of street art to cover the wall.

In the next couple of months, we will call a small meeting to organise our community response to this idea. If you have any ideas, spare time or talent, start thinking of what you could contribute and if you are a willing volunteer, please email wenhastonwarbler@gmail.com to register your interest.

Litter Pick

How fortunate we are to live in such a wonderful village, but even so, from time to time it might be necessary to do a bit of spring cleaning. In next month's Parish Council meeting there will be a discussion to investigate the logistics of organising a litter pick in the parish.

Early thoughts are that a small team of volunteers will be needed to coordinate this. Please email wenhastonwarbler@gmail.com or phone 478505 if you feel that you are able to spare a little bit of time to help in this challenge. *Denise C.*

Ain't That a Shame!

Church Common Daffodils

It was very sad to see the destruction of a beautiful area of daffodils by the path on Church Common. This occurred on Monday 9th April in the early evening. Having waited for so long for the arrival of Spring and the beautiful displays of flowers that come with it. It is hard to imagine the reasons for such pointless vandalism. Perhaps those who were responsible would like to plant some replacements come the Autumn. *Name withheld*

Please Clear Up After Your Dog

It must have been a busy period for the Poo Bag Fairy recently or maybe the drizzly weather did not help with spotting the nicely tied bags of doggy poo. It must be frustrating for her as the two bags in question, were both lovingly placed in readiness to be collected.

As you can see from the images. #1 was placed in the middle of Bartholomew's Lane but unfortunately had been run over by the next day. #2 located on Bramfield Road was hung off a tree only a few yards away from the bright red bin, which unfortunately the owner may have missed



Now, on a serious note, removing the waste is only half the task. Please, all visitors and residents of Wenhaston bag and bin your doggy poo responsibly so we can all freely walk around the village without stepping into or seeing it spread around. *Name Withheld*

NEWS FROM THE CHURCH

Eastertide was a happy and joyful occasion at St. Peters, it was good and encouraging to have so many people and some children with us at our Easter Eucharist. The Church was beautifully decorated thanks to the hard work of the flower arrangers, and the teas on Easter Monday were very well attended. We welcomed both holiday makers and village people, who enjoyed the tea and home-made cakes which had been provided by our willing cooks. The Easter weekend raised nearly £500.00 for Church funds and as always, we were very grateful. We eventually held our "cancelled" Jumble Sale on Saturday 7th. April and we were rewarded by a very successful result, £634.00 for Church funds. Jumble Sales are a lot of hard work and we very much appreciate the help of our many friends in the village who support us at this event by donating their Jumble and helping run the Stalls etc. However, without Margaret Bloomfield we would not be able to continue having them as it is Margaret who does so much in organising the sale and collecting mountains of jumble! Thank you, Margaret. Our next fund-raising event is a PLANT SALE on SATURDAY 12th. MAY. This will be held in the CHURCHYARD but IF WET in the CHURCH. We shall be grateful to receive donations of any spare plants which you have especially bedding plants. Should you need us to collect please phone either myself (478378) or Margaret B. (478502) There will also be a cake stall and a raffle and we shall be serving coffee in the Church. PLEASE DO COME AND SUPPORT US. *Margaret G*

CHURCH SERVICES IN MAY

- May 6th. TEAM EUCHARIST AT ST. MARY'S HALESWORTH 9.30.am
 No Service at St. Peter's
- 13th. PARISH EUCHARIST 9.30.am. TEAM EVENSONG AT WISSETT 6.30.pm.
- 20th. CHURCHES TOGETHER IN THE BLYTH VALLEY PENTECOST
 SERVICE 11 O'CLOCK. No Service at St. Peter's
- 27th. PAUSE FOR THOUGHT 11.15am.

Wenhaston Methodist Church

Sunday Services at 10.30am		Tuesday Meetings at 2.30pm	
6th	L.A.	1st	Women's Fellowship
12th	Keith Durrant	8th	Bible Study
19th	Laura Lawrence martin	15th	Women's Fellowship
26th	Rev Peter Layson	22nd	Bible Study
		29th	Healing Meeting
Saturday 5th 9.30 - 11.00 am "Pray Awhile" on a come & go basis for prayer & meditation. ALL WELCOME AT ANY EVENT			