

# Wenhaston with Mells Hamlet Parish Council

## Neighbourhood Development Plan



### Vision and Neighbourhood Development Plan Objectives Statement

6<sup>th</sup> March 2016

**Page Intentionally Blank**

## Abstract

Wenhaston with Mells Hamlet Parish Council has decided to undertake the process of producing a Neighbourhood Development Plan, as defined in the Localism Act 2011. This plan is to create a vision for the development and use of land within Wenhaston with Mells from 2015 to 2030 related to the views of the residents of the area and consistent with National and Local Planning Policies.

The population of Wenhaston with Mells has been consulted through a full household Issues and Concerns Survey questionnaire. Analysis of the results of the survey has been carried out in the presence of an independent observer to identify the main concerns that should be the basis of the Neighbourhood Development Plan. The consensus issues have been collated into a vision and objectives statement to guide future development within the Parish. This document records that Vision and Neighbourhood Development Plan Objectives statement.

**Page Intentionally Blank**

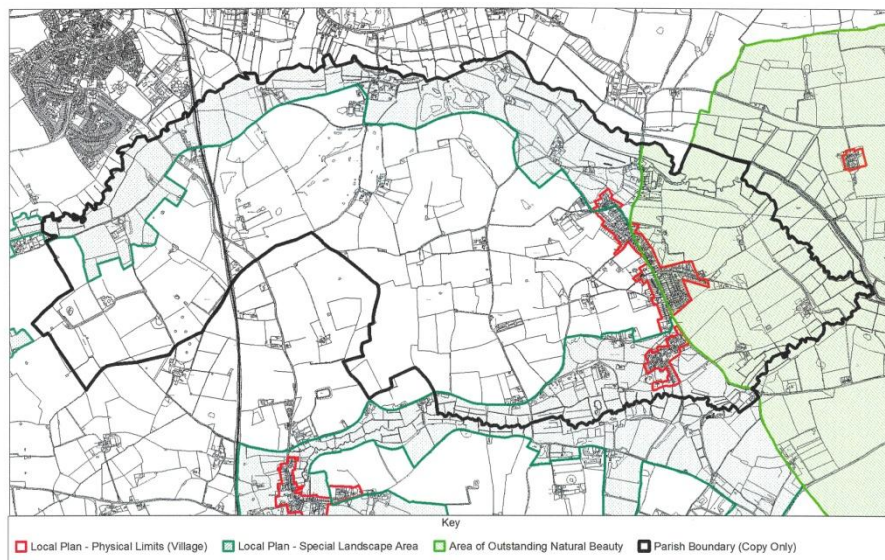
## **Table of Contents**

Abstract.....	3
1. Introduction.....	7
2. The Consultation Process.....	7
3. The Vision Statement.....	8
4. Neighbourhood Development Plan Objectives.....	8
5. References.....	9

<b>Document Revision History</b>		
<b>Version</b>	<b>Changes</b>	<b>Date</b>
<b>Draft</b>		<b>13 June 2016</b>
<b>Issue 1</b>	<b>Typographical correction Addition of Reference section</b>	<b>27 June 2016</b>
<b>Issue 2</b>	<b>Addition of date to front sheet</b>	<b>9 July 2016</b>

## 1. Introduction

Wenhaston with Mells Hamlet is a sprawling parish situated in North Suffolk and at the northern end of the Suffolk Coastal District. It is 8km west of the coast at Southwold and sandwiched between the Blythburgh and Minsmere RAMSAR Convention site and the market town of Halesworth. It has large areas in the Suffolk Coast and Heaths Area of Natural Beauty, AONB, Suffolk Special Landscape Area, SSLA, and forms the northern end of the Suffolk Sandlings.



The parish comprises about 430 dwellings in total, largely located in Wenhaston Village and Wenhaston Blackheath settlements with three small clusters at Mells and also isolated dwellings. The road from the south east to the north west is about 6.5 km and footpaths and roads from the north east to the south west 3.5km. In total the parish encloses a land area of about 8000 hectares.

Wenhaston with Mells Hamlet Parish Council has decided to undertake the process of producing a Neighbourhood Development Plan (NDP), as defined in the Localism Act 2011. This plan is to create a vision for the development and use of land within Wenhaston with Mells from 2015 to 2030 related to the views of the residents of the area.

The initial stage of the NDP is to identify issues and concerns of parishioners but also community assets and aspirations and from this information to develop a 'vision' for the future.

The analysis of the data received from the full household questionnaire survey has been used to develop the vision and objectives statement that will guide the NDP

## 2. The Consultation Process

The population of the Parish has been consulted by the delivery of 430 questionnaires delivered by hand, one per dwelling, by volunteers. The results of the returns has been reported, ref 1.

Feedback parishioner consultation of the results has been carried out through a presentation day where comments were encouraged from attendees for further consideration into the data analysis process.

The data and all comments were analysed in the presence of an independent observer, ref 2. The significant issues were developed into a draft vision and plan objectives statement which was presented to the Parish Council for consideration and approval. Following this consultation, and with requested amendments, the final vision and plan objectives statement was approved for use by the Parish Council on 6<sup>th</sup> March 2016.

### **3. The Vision Statement**

The Neighbourhood Plan will have at its core the ambition to enhance the lives of residents by protecting the rural identity of the Parish of Wenhaston with Mells Hamlet, its scenic beauty, the balance of built and natural landscape, tranquillity and safety.

In Wenhaston it will support community infrastructure, provide sufficient housing stock to meet the requirements generated by local needs and promote sustainable development. This will ensure a continued vibrant, safe and supportive village community.

### **4. Neighbourhood Development Plan Objectives**

#### **1. Environment.**

- 1a. To protect and enhance wildlife habitats.
- 1b. To protect and enhance the Wenhaston commons and footpath network.
- 1c. Encourage the reduction of the risk of flooding

#### **2. Development**

- 2a. To protect the AONB from adverse development.
- 2b. To limit new housing to within the development boundary.
- 2c. To limit new housing to that appropriate in tenure, size, design and in a quantity appropriate to local need in line with National and District policy.
- 2d. To promote appropriate small business.



### 3. Amenities and Facilities.

- 3a. To protect and enhance village amenities and public facilities and services including Broadband, the Playing Field and equipment, the Churches, the Post Office, the Village Hall and the Public House.
- 3b. Identify and promote measures to improve road safety and improve public transport.

### 4. Character, History and Heritage

- 4a To protect and enhance buildings, spaces and views important to the character of the Parish, both within and outside the physical limits for the benefit of residents and visitors and education of future generations.

## 5. References

1. Issues and Concerns Survey, 30<sup>th</sup> May to 13<sup>th</sup> June 2015, WwMNDP/01.
2. Issue and Concerns Data Analysis Process, WwMNDP/09.