

Wenhaston with Mells Hamlet Parish Council

Neighbourhood Development Plan



Demographic Information for Wenhaston with Mells Hamlet - 2011 Census

Page Intentionally Blank

Abstract

Wenhaston with Mells Hamlet Parish Council has decided to undertake the process of producing a Neighbourhood Development Plan, as defined in the Localism Act 2011. This plan is to create a vision for the development and use of land within Wenhaston with Mells from 2015 to 2030 related to the views of the residents of the area and consistent with National and Local Planning Policies.

The population of Wenhaston with Mells has been consulted through a full household Issues and Concerns Survey questionnaire. This document records the demographic composition of the parish and is based upon information in the National 2011 Census published data. The data has been used to gauge the representative validity of the profile obtained from the returned questionnaires.

Page Intentionally Blank

Table of Contents

Abstract	3
Document Revision History	6
1. Introduction	7
2. The Office of National Statistics 2011 Census Data	8
2.1 The composition of the population	9
Fig. 2.1.1 Distribution of Population by Sex – 2011	9
Fig. 2.1.2 Population Distribution by Age Group – 2011	9
2.2 Country of Birth	10
2.3 Car/Van availability in households	10
Fig. 2.3.1 Car/Van Availability in Households – 2011	10
2.4 Communal Residential Establishments	11
2.5 Unemployment/Disability	11
2.6 Housing (439 households)	11
Fig 2.6.1 Housing Usage - 2011	11
Fig. 2.6.2 Housing Types – 2011	12
2.7 Tenure	12
Fig. 2.7.1 Housing Tenure – 2011	12
2.8 Employment	13
2.8.1 Employment Synopsis	13
2.9 Occupations	13
2.9 Health and Provision of Unpaid Care	14
3. The Parish Today	14
4. Conclusions	Error! Bookmark not defined.

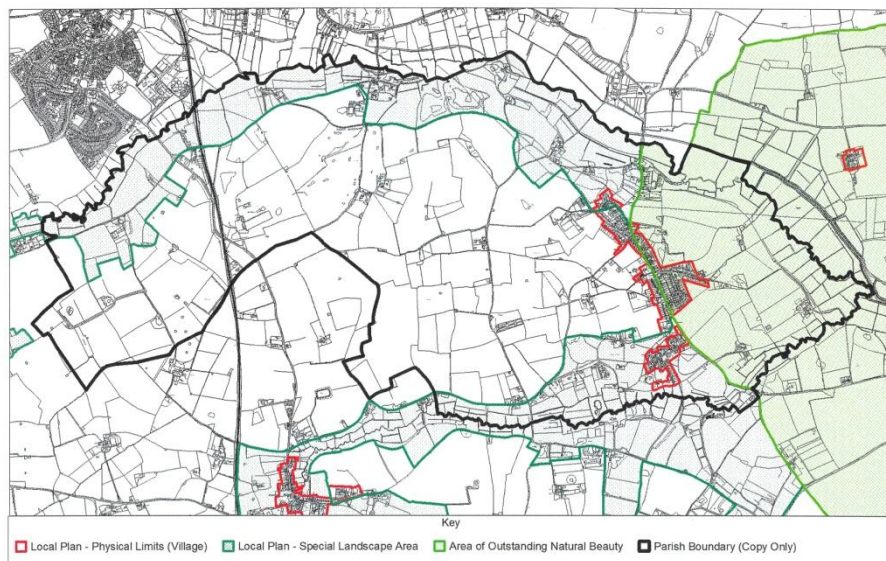
Document Revision History

Version	Changes	Date
Draft		12 July 2016
Review Changes	Addition of graphical data display	24 July 2016
Issue 1	No further comments	26 July 2016

1. Introduction

Wenhaston with Mells Hamlet is a sprawling parish situated in North Suffolk and at the northern end of the Suffolk Coastal District. It is 8km west of the coast at Southwold and sandwiched between the Blythburgh and Minsmere RAMSAR^{note a} Convention site and the market town of Halesworth. It has large areas in the Suffolk Coast and Heaths Area of Natural Beauty (AONB), Suffolk Special Landscape Area (SSLA), and forms the northern end of the Suffolk Sandlings.

Note a. RAMSAR Convention, 1971, Convention on Wetlands of International Importance Especially as Waterfowl Habitat.



The parish comprises about 439 dwellings in total (Census2011), largely located in Wenhaston Village and Wenhaston Blackheath settlements with three small clusters at Mells and also isolated dwellings. The road from the south east to the north west is about 6.5 km and footpaths and roads from the north east to the south west 3.5km. In total the parish encloses a land area of about 8000 hectares.

Wenhaston with Mells Hamlet Parish Council has decided to undertake the process of producing a Neighbourhood Development Plan (NDP), as defined in the Localism Act 2011. This plan is to create a vision for the development and use of land within Wenhaston with Mells from 2015 to 2030 related to the views of the residents of the area.

The initial stage of the NDP is to identify issues and concerns of parishioners but also community assets and aspirations and from this information to develop a 'vision' for the future.

The demography of the parish has been assessed from Office of National Statistics 2001 Census data to provide information to the analysis process of the issues and concerns data, especially to assess if the returned questionnaire information is a fair representation of the population.

2. The Office of National Statistics 2011 Census Data

This information is a selection of the significant facts concerning the population and structure of the parish.

In 2011, the Parish of Wenhaston with Mells had a population of 801 living in 379 households.

2.1 The composition of the population

420 females and 381 males (total 801)

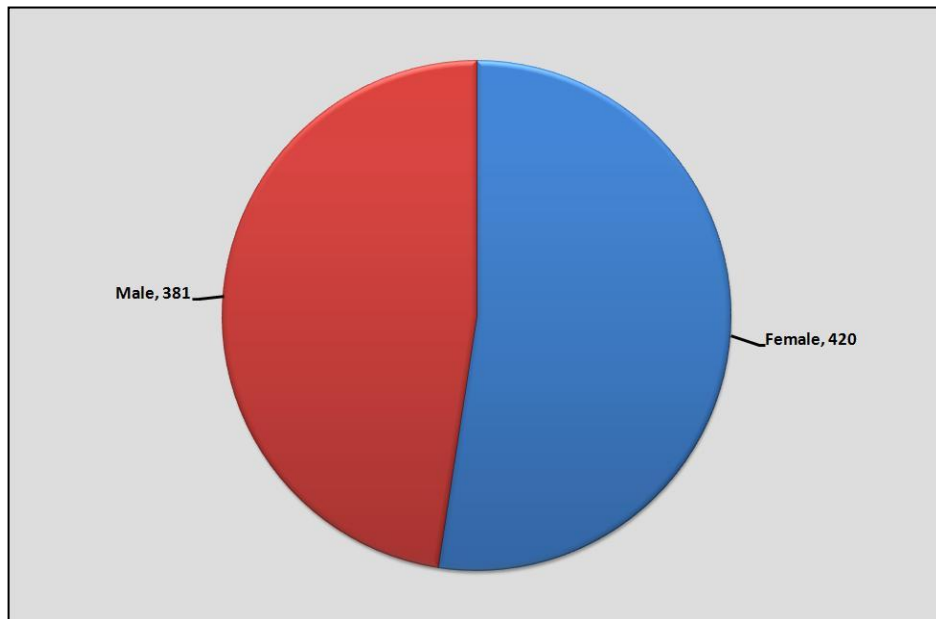


Fig. 2.1.1 Distribution of Population by Gender – 2011

33 residents aged 0 – 4 years
58 residents aged 5 – 15 years
27 are aged 16 – 18 years
426 are aged between 19 and 64 years
257 are aged over 65 years and over

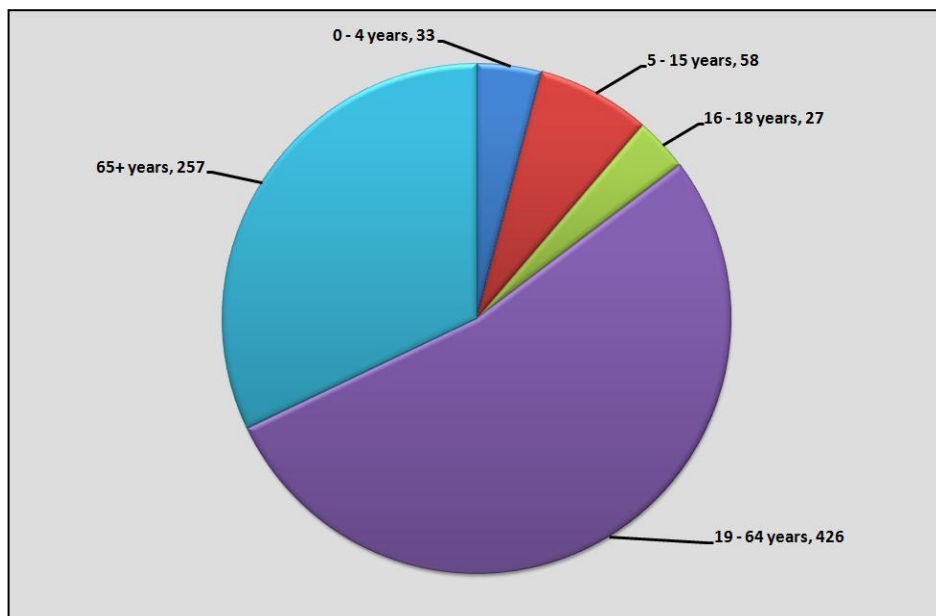


Fig. 2.1.2 Population Distribution by Age Group – 2011

2.2 Country of Birth

Born in England	741
Northern Ireland	1
Scotland,	7
Wales	7
Ireland	7
EU member countries	10
EU Accession Country	1
Other countries	27
Total not born in UK or Ireland	38

2.3 Car/Van availability in households

No car or vans	35
1 car or van	156
2 cars or vans	134
3 cars or vans	38

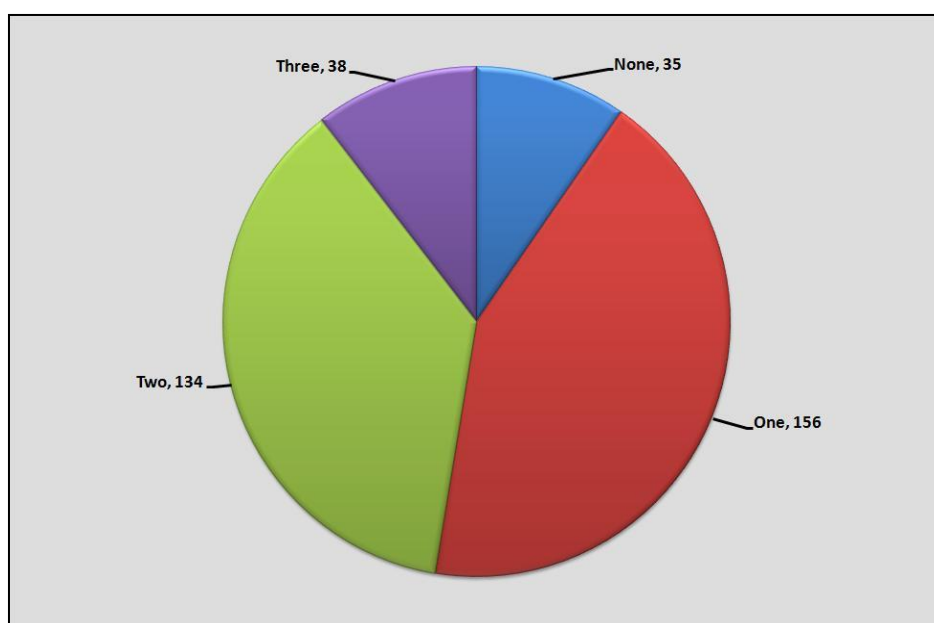


Fig. 2.3.1 Car/Van Availability in Households – 2011

2.4 Communal Residential Establishments

There are no communal residential establishments

2.5 Unemployment/Disability

Number of households with dependent children	63
Households with no adults in employment with dependent Children	6
Households with no adults in employment with no dependent Children	147
One person in household with long term health problem/disability with dependent children	10
One person in household with long term health problem/disability with no dependent children	107

2.6 Housing (439 households)

Households with at least 1 usual resident	379
Households with no usual resident	60

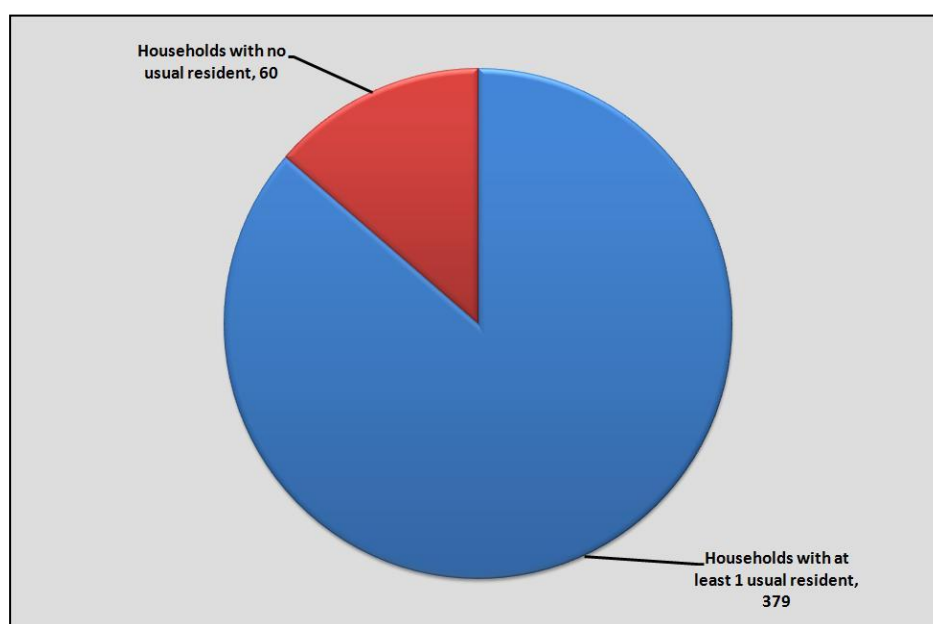


Fig 2.6.1 Housing Usage - 2011

Whole house/bungalow detached	280
Whole house/bungalow semi	94
Whole house/bungalow terraced	58
Flats/apartments	6
Caravan	1

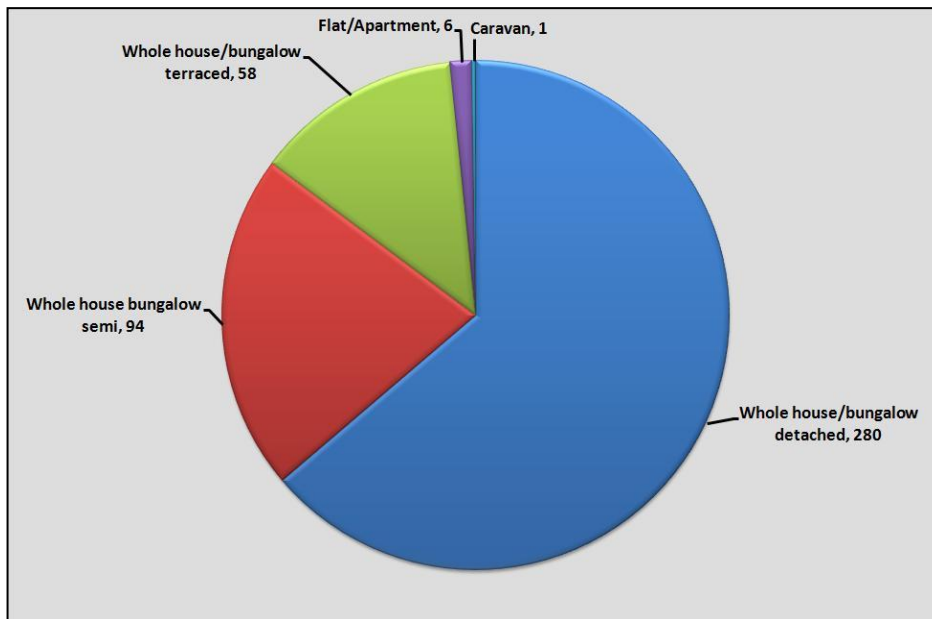


Fig. 2.6.2 Housing Types – 2011

2.7 Tenure

Owned outright	216
Mortgage	88
Shared housing	5
Social rented (local authority)	2
Social rented (other)	23
Private rented (landlord/letting agency)	31
Private rented (other)	6
Living rent free	8

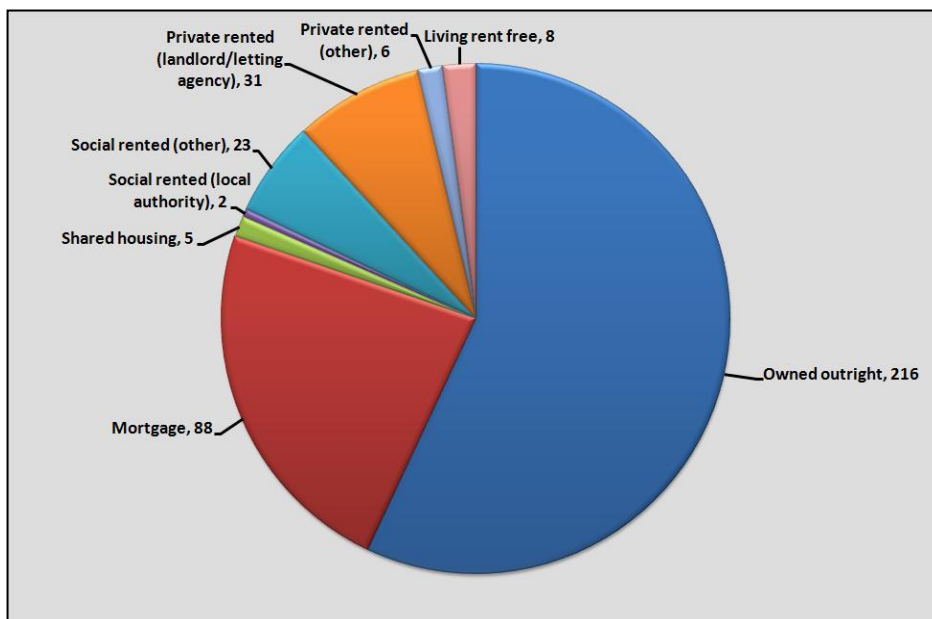


Fig. 2.7.1 Housing Tenure – 2011

2.8 Employment

	Females	Males
Economically active 16-74 part time	60	10
Economically active 16-74 full time	66	107
Self employed	51	74
Unemployed	7	7
Economically active full time student	11	4
Economically inactive retired	91	66
Economically inactive student	8	4
Economically inactive looking after home/family	7	1
Economically inactive long term sick/disabled	7	7
Economically inactive other	7	3
Unemployed 16 – 24	2	2
Unemployed 50-74	1	2
Never worked	0	0
Long term unemployed 16 – 74	4	3

2.8.1 Employment Synopsis

188 in full time employment
70 are in part time employment
125 people are self employed
7 people are long term unemployed
157 people are retired

2.9 Occupations

Managers, directors and senior officials	54
Professional occupations	65
Associate Professional and technical occupations	36
Administrative and secretarial occupations	34
Skilled trades occupations	69
Caring, leisure and other service occupations	38
Sales and customer service occupations	22
Process, plant and machine operatives	20
Elementary occupations (jobs requiring no formal educational qualifications, usually involving routine tasks, and often with physical effort)	44

2.9 Health and Provision of Unpaid Care

Day to day activities limited a lot	67
Day to day activities limited a little	96
Day to day activities not limited	638
Very good health	339
Good health	229
Fair health	126
Bad health	34
Very bad health	3

Provides unpaid care:

1-19 hours a week	77
20 – 49 hours a week	13
50 or more hours a week	15

3. The Parish Today

The parish has a relatively high number of residents over 65 (32%, almost double the national average). This is made up partly of those who have lived here a long time, and others who have moved in to enjoy the rural lifestyle. This impacts on other demographic information.

There are a very high proportion of residents of UK origin, with little ethnic diversity.

The rate of car ownership is high. This is to be expected as rural public bus transport is limited, services are often some distance away in towns and cities, and the lack of personal mobility for some residents makes the use of public transport difficult. When the holiday homes are occupied, car use is increased.

There are a significant number of houses used as second homes or holiday lets (about 16%). Housing tenure is dominated by owner occupation. Only 67 properties are rented. The high number of houses owned outright probably reflects older people who have paid off their mortgages.

Most people of working age are in employment. There are a high number of self employed people, and some of these work from home. Those in work do so in a variety of situations and at a variety of levels. There are also a large number of households with no adults in employment (147), which reflects the age profile of the parish.

Quite a large number of residents are limited in some way, or have health issues – as you would expect with older people. There are a large number of unpaid carers (100), providing unpaid care of up to 50 hours a week.

Conclusions

Wenhaston with Mells is a reasonably healthy parish considering its age profile. Employment levels are good. The statistics reveal that many own their houses outright. A large proportion of residents is in the higher socio economic groups and is comparatively well off despite many being retired.

This would explain the fact that the village is socially active with many groups and organizations.